

1 8 3 3

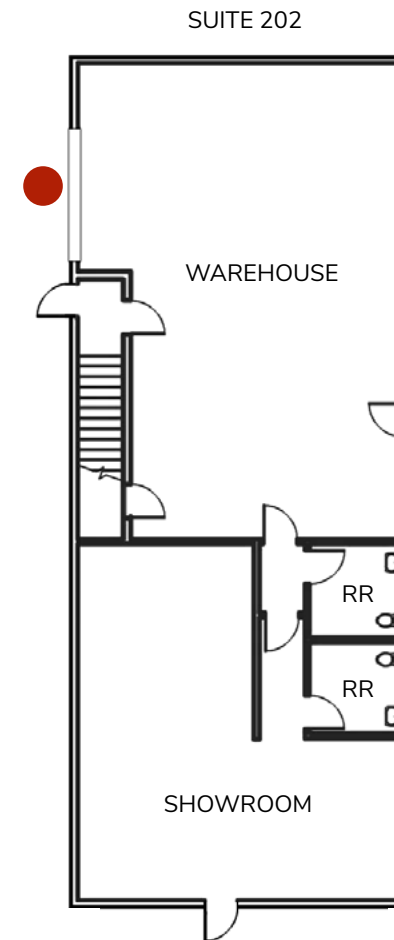
DIAMOND ST, SUITE 202

SAN MARCOS | 92078



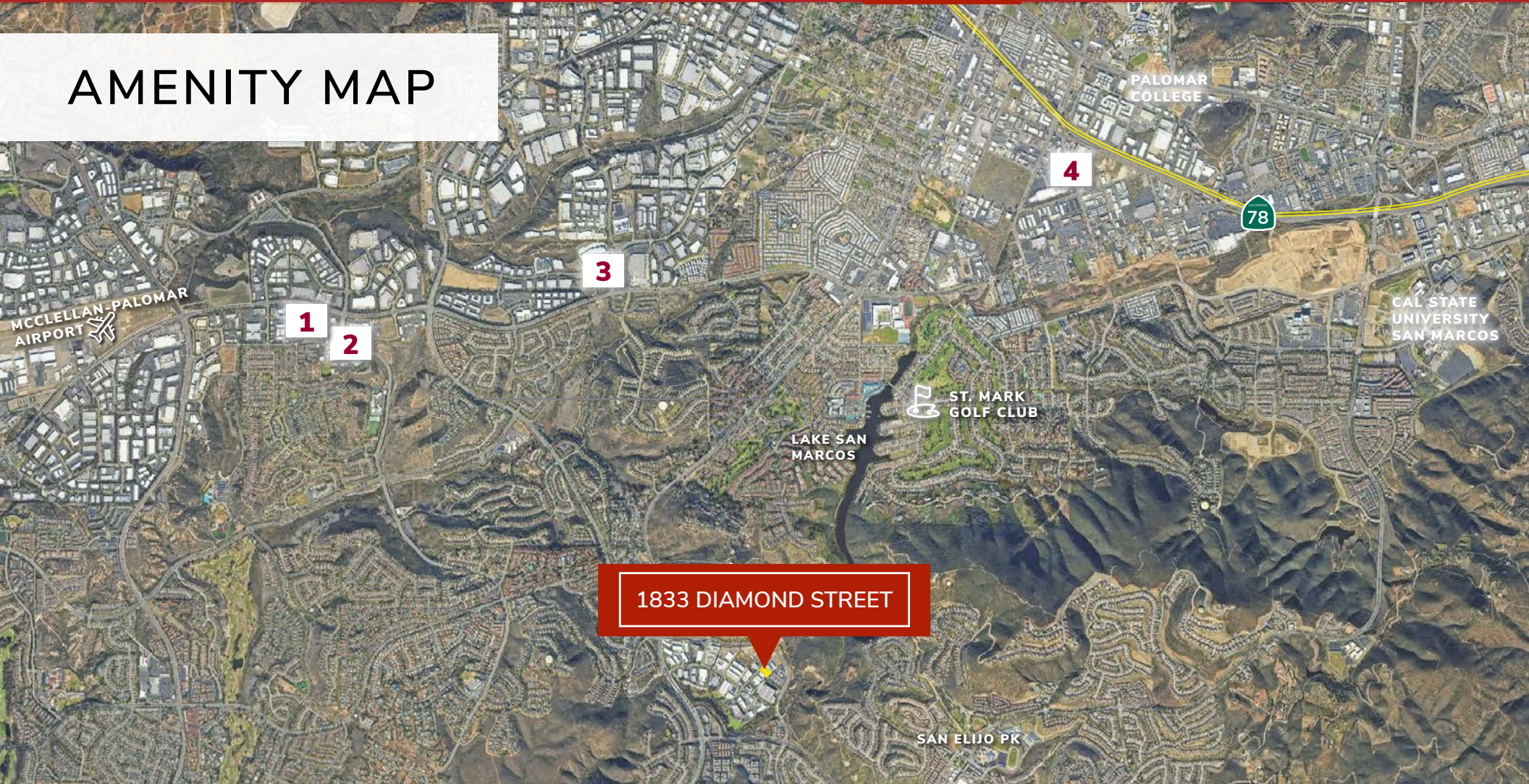
PROPERTY FEATURES

Size	2,208 SF
Bonus Mezzanine	954 SF
Loading	1 Grade Level Door
Clear Height	18'
Power	800 Amps
Zoning	L-I - Light Industrial
Parking	5 Spaces
Lease Rate	\$1.65/SF Gross



● Grade Level Door

AMENITY MAP



1833 DIAMOND STREET

1 THE SQUARE @ BRESSI RANCH

2 BRESSI RANCH VILLAGE CENTER

3 VISTA PALOMAR PARK

4 GRAND PLAZA



1 8 3 3

DIAMOND ST, SUITE 202

SAN MARCOS | 92078

RUSTY WILLIAMS, SIOR

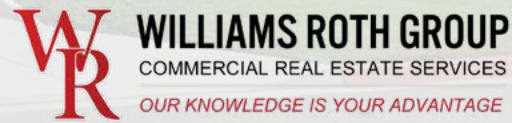
760.448.2453 | DRE# 01390702
rwilliams@lee-associates.com

CHRIS ROTH, SIOR

760.448.2448 | DRE# 01789067
croth@lee-associates.com

JAKE RUBENDALL, SIOR

760.448.1369 | DRE# 02037365
jrubendall@lee-associates.com



Lee & Associates Commercial Real Estate Services, Inc. - NSDC | 1902 Wright Place, Suite 180, Carlsbad, CA 92008
P: (760) 929-9700 | F: (760) 929-9977 | www.lee-associates.com/sandiegonth | Corporate ID# 01096996

No warranty or representation is made to the accuracy of the foregoing information. Terms of sale or lease and availability are subject to change or withdrawal without notice.
Any of the foregoing information will need to be separately verified by Buyer.