

# 2215

## AUTO PARK WAY

Escondido | 92029



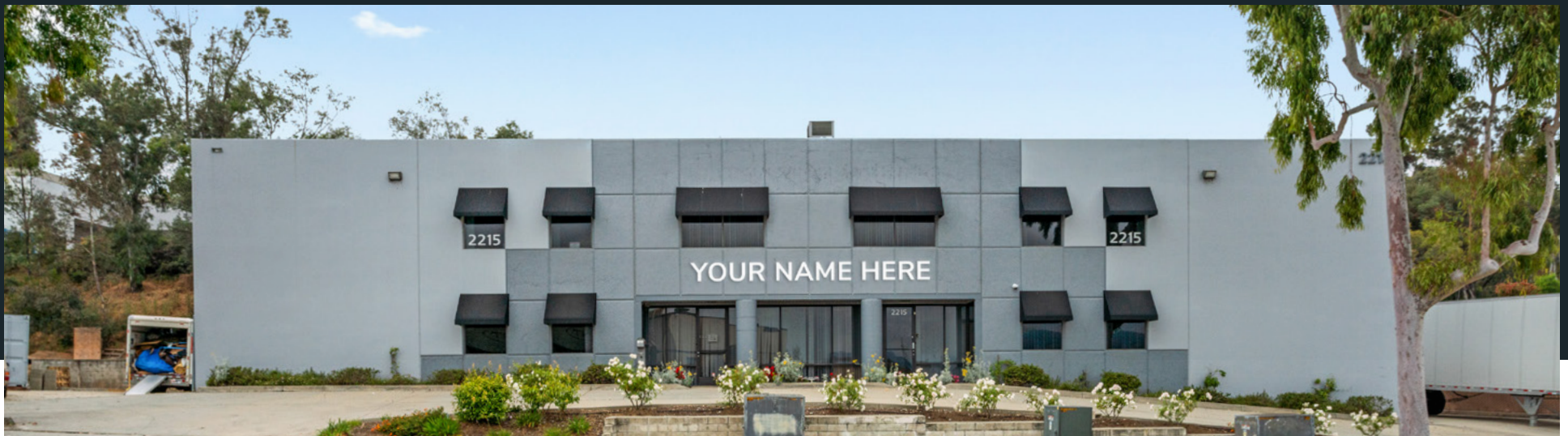
**LEE & ASSOCIATES**  
COMMERCIAL REAL ESTATE SERVICES

**WILLIAMS ROTH GROUP**  
COMMERCIAL REAL ESTATE SERVICES  
*OUR KNOWLEDGE IS YOUR ADVANTAGE*

**FOR LEASE | 13,916 SF  
FREESTANDING INDUSTRIAL**

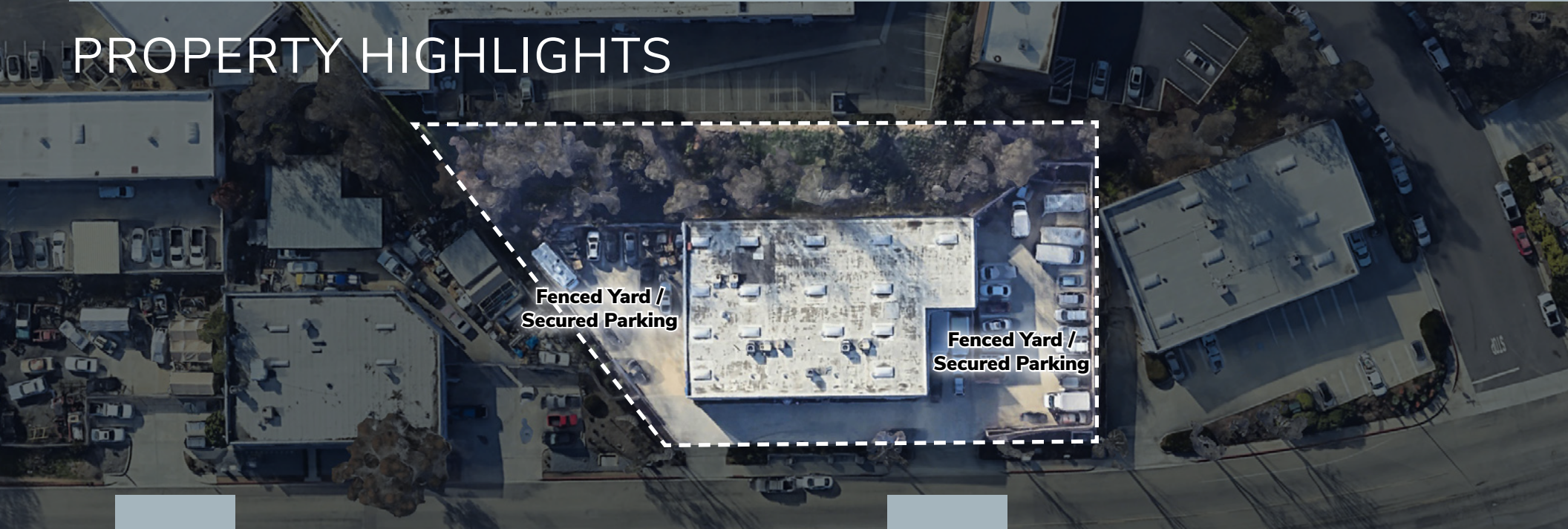
# PROPERTY FEATURES

<b>Size</b>	13,916 SF freestanding building	<b>Power</b>	400a/110 - 208v 3p
<b>Office</b>	5,800 SF	<b>Parking</b>	24 spaces (1.72/1,000 SF)
<b>Dock High Doors</b>	2 Dock High Positions	<b>Zoning</b>	M-1: Light Industrial
<b>Grade Level Doors</b>	2 Oversized Grade Doors	<b>Available</b>	Now
<b>Clear Height</b>	18'-21'	<b>Lease Rate</b>	\$1.54/SF Gross





# PROPERTY HIGHLIGHTS



Fenced yards / Secured parking



Frontage on Auto Park Way



Excellent access to I-15 & HWY-78



Nearby retail & amenities



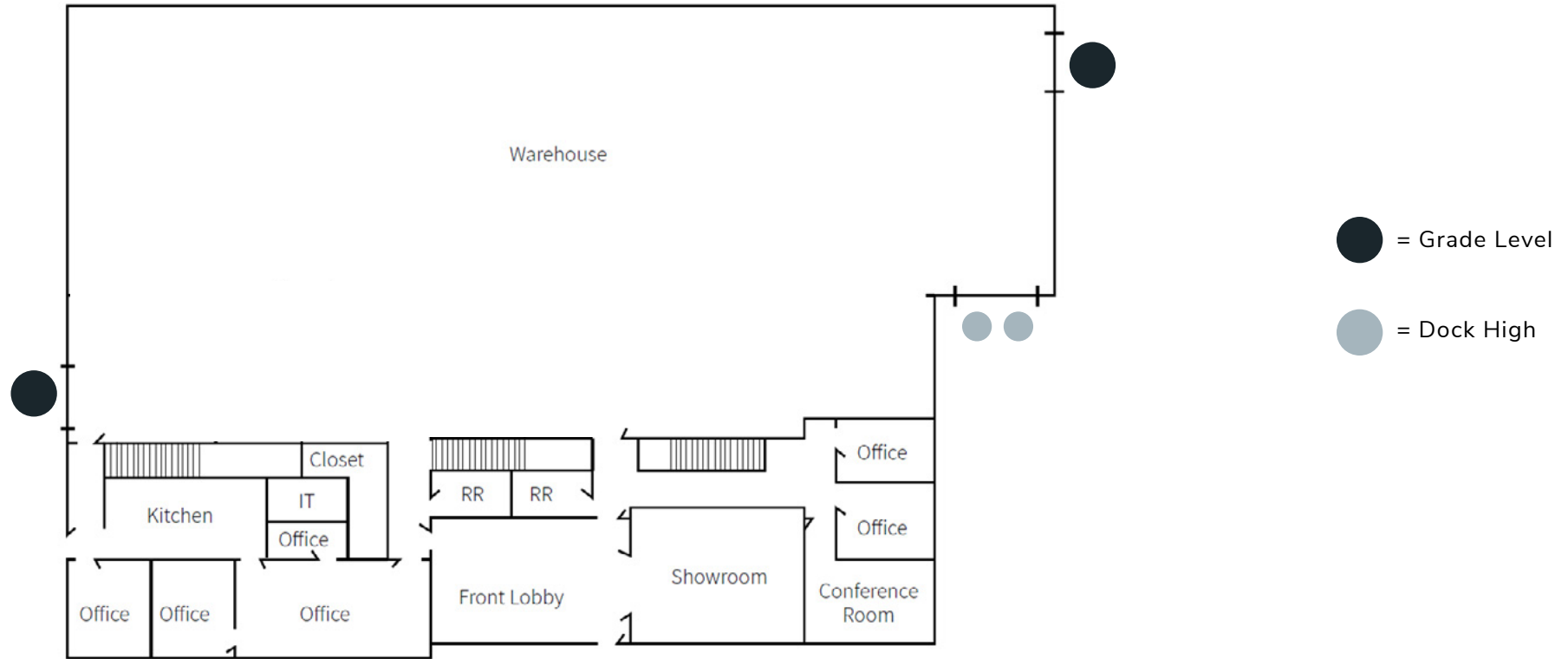
Dock & Grade loading



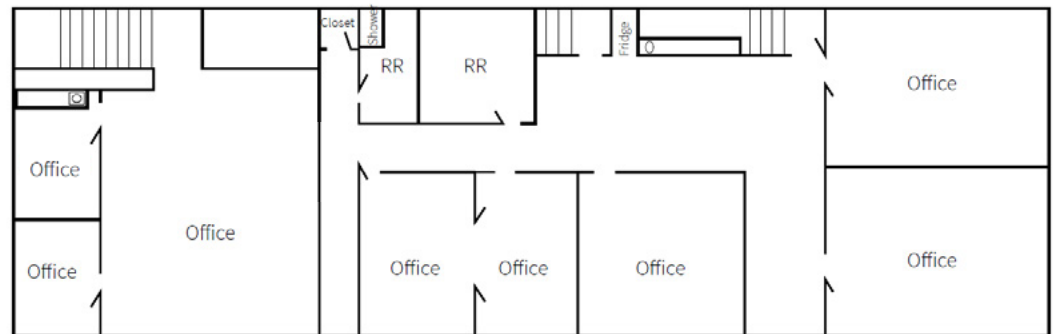
Private ownership

# FLOOR PLAN

## FIRST FLOOR



## SECOND FLOOR





# PROPERTY PHOTOS





# NEARBY AMENITIES

# 2215

AUTO PARK WAY

## ESCONDIDO AUTOPARK

1

2

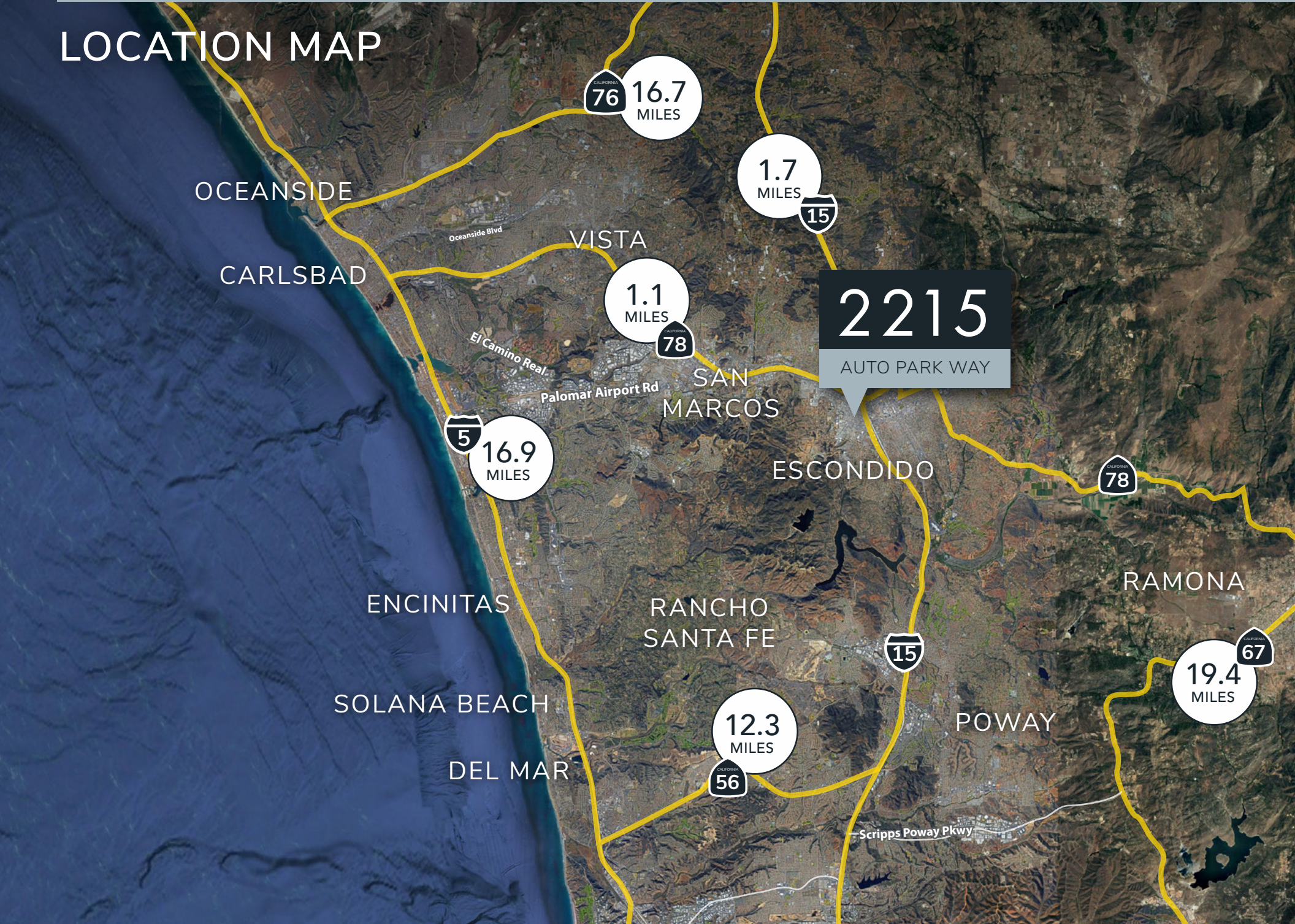
1 ESCONDIDO VALLEY CENTER

2 ESCONDIDO PROMENADE





# LOCATION MAP



OCEANSIDE

CARLSBAD

VISTA

1.1 MILES

1.7 MILES

2215

AUTO PARK WAY

SAN MARCOS

16.9 MILES

ESCONDIDO

ENCINITAS

RANCHO SANTA FE

RAMONA

SOLANA BEACH

12.3 MILES

POWAY

19.4 MILES

DEL MAR

Scripps Poway Pkwy



# Escondido

Settled in a long valley in the coastal mountains of Southern California, Escondido, which means “hidden” in Spanish, lies about 18 miles inland, 100 miles south of Los Angeles, and 30 miles northeast of San Diego. Surrounded by avocado and citrus groves, our award-winning City is a diverse, vibrant community with just the right mix of small-town friendliness and big-city buzz.



median household income  
**\$72,697**



population  
**151,746**



businesses  
**5,772**



Center for the Arts



San Diego Zoo Safari Park



2 Lakes



Golf Courses

## Escondido's local industries

Health Care

Construction

Retail

manufacturing



# 2215

## AUTO PARK WAY

E s c o n d i d o | 9 2 0 2 9

**RUSTY WILLIAMS, SIOR**

760.448.2453 | DRE# 01390702  
rwilliams@lee-associates.com

**CHRIS ROTH, SIOR**

760.448.2448 | DRE# 01789067  
croth@lee-associates.com

**JAKE RUBENDALL, SIOR**

760.448.1369 | DRE# 02037365  
jrubendall@lee-associates.com

YOUR NAME HERE



Lee & Associates Commercial Real Estate Services, Inc. - NSDC | 1902 Wright Place, Suite 180, Carlsbad, CA 92008  
P: (760) 929-9700 | F: (760) 929-9977 | [www.lee-associates.com/sandiegonth](http://www.lee-associates.com/sandiegonth) | Corporate ID# 01096996

No warranty or representation is made to the accuracy of the foregoing information. Terms of sale or lease and availability are subject to change or withdrawal without notice.  
Any of the foregoing information will need to be separately verified by Buyer.